



Vertex Water Features

Lake Aeration Systems & Floating Fountains

F L O A T I N G F O U N T A I N S



GEYSERJET™

Create a strong statement with the white and frothy activity of the GeyserJet series. Its heavy, wind-resistant display is highly visible during the day and a dramatic focal point at night when illuminating its dense, aerated pattern.

Powered by a U.L. listed heavy-duty pump, the GeyserJet standard equipment includes a complete U.L. listed control panel.

All fountain components are fully waterproof and made of the finest corrosion resistant materials to provide years of dependability and high performance.

FEATURES

FLOTATION

- ◆ U.V. resistant rotocast unit
- ◆ Four seamless, water-tight compartments for ballast
- ◆ Brass fillplugs
- ◆ 5-year warranty

CONTROL PANEL

- ◆ U.L. listed per National Electrical Code
- ◆ Weatherproof steel enclosures

CABLE

- ◆ STW-A rated, U.L. listed underwater cable

PUMPS

- ◆ 1 & 2 HP units feature cast bronze Peabody Barnes submersibles
- ◆ 5 HP and up use high performance submersible turbines
- ◆ Franklin stainless steel sealed motors

NOZZLES

- ◆ Cast bronze and brass GeyserJet nozzle

CORROSION RESISTANT

- ◆ Cast brass nozzle
- ◆ Rotocast float
- ◆ Stainless steel frame and fastenings
- ◆ Bronze/copper lights

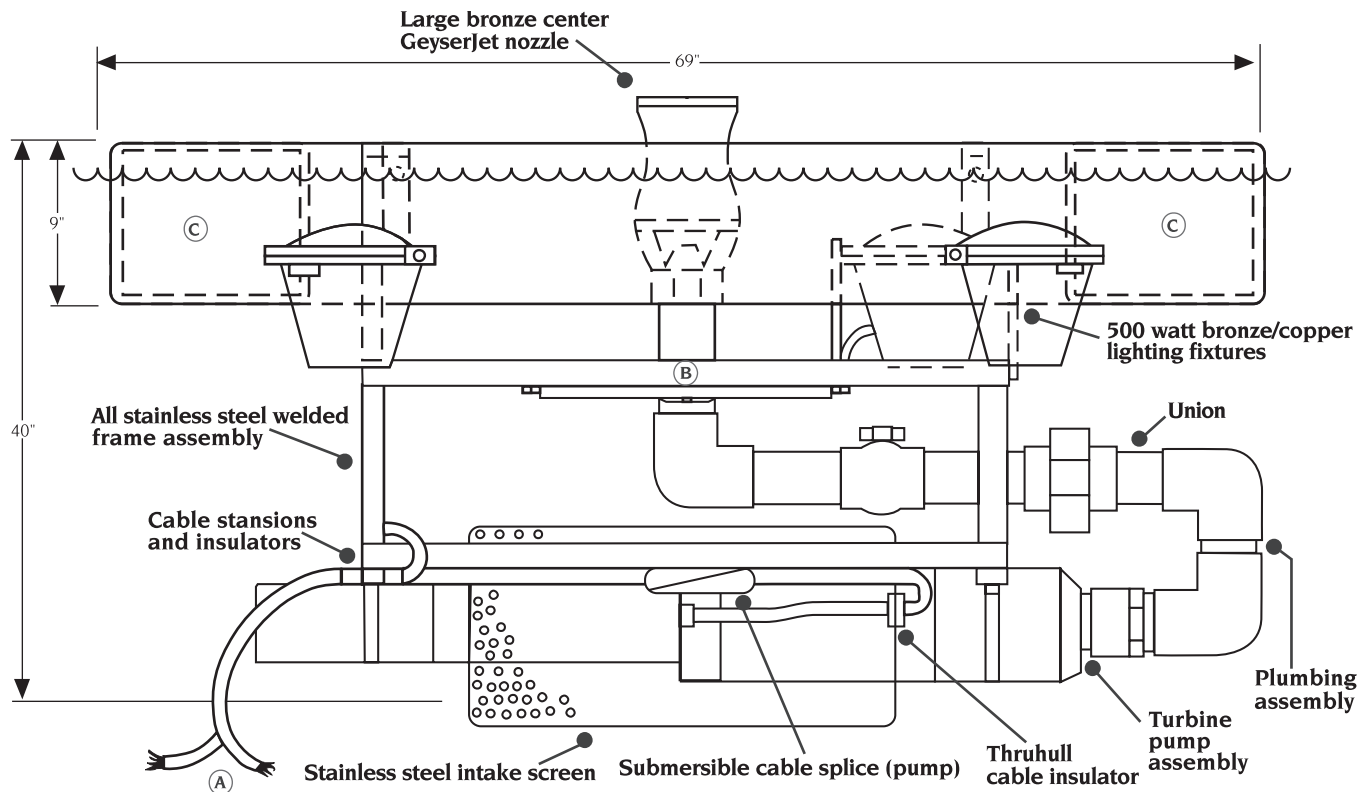
LIGHTS

- ◆ Cast bronze/copper housing
- ◆ Stainless steel brackets
- ◆ Neoprene gaskets
- ◆ Tempered lenses
- ◆ Bronze/stainless steel lens protectors

BENEFITS TO LAKE

- ◆ Aesthetics — beautifies waterway
- ◆ Increases property value and quality of community
- ◆ Adds decor to community
- ◆ Assists in aeration of lake system, aiding in fish dynamics
- ◆ Through agitation, prevents aggregation of planktonic algae on the surface and helps in reduction of mosquito larvae

GEYSERJET™



A	STW-A submersible cable (pump & lights)
B	Bronze submersible junction box (lights)
C	(4) separate ballast compartments with brass fill plugs

DISPLAY SPECIFICATIONS

HP	HT	NOZZLE DIA.	# LIGHTS	TOTAL WATTAGE	AVAIL. PHASE
1	8'	3"	1	500w	1
2	12'	3"	2	1000w	1
5	20'	4"	3	1500w	1,3
7.5	22'	6"	3	1500w	1,3
10	25'	6"	2	2000w	1,3
15	28'	6"	3	3000w	1,3
20	32'	6"	3	3000w	3

LIGHTING SPECS

Total Wattage	500	1000	1500	2000	2500	3000	3500	4000
AMP Draw	5	10	15	20	25	30	35	40



Vertex Water Features

Lake Aeration Systems & Floating Fountains

2100 NW 33rd Street / Pompano Beach, FL 33069

(800) 432-4302 / Fax (954) 977-7877

www.vertexwaterfeatures.com / e-mail: info@vertexwaterfeatures.com

PUMP AMPERAGE (208V MOTORS AVAILABLE)

HP	230v1Ø	230v3Ø
1	7	-
2	14	-
5	28	17
7.5	42	25
10	51	32
15	72	47
20	-	61

Because of the electric equipment involved, floating fountains are not designed for waterways where swimming or water sports are permitted. Specifications recorded during calm wind conditions.

Install all electrical equipment in accordance with Article 680 of the National Electrical Code and all local codes. Vertex Water Features reserves the right to improve and change our designs and/or specifications of our fountains without notice or obligation.

© 2005 Vertex Water Features